

Whale[®] Shower Sump System - Simple Grey Waste Management Kit

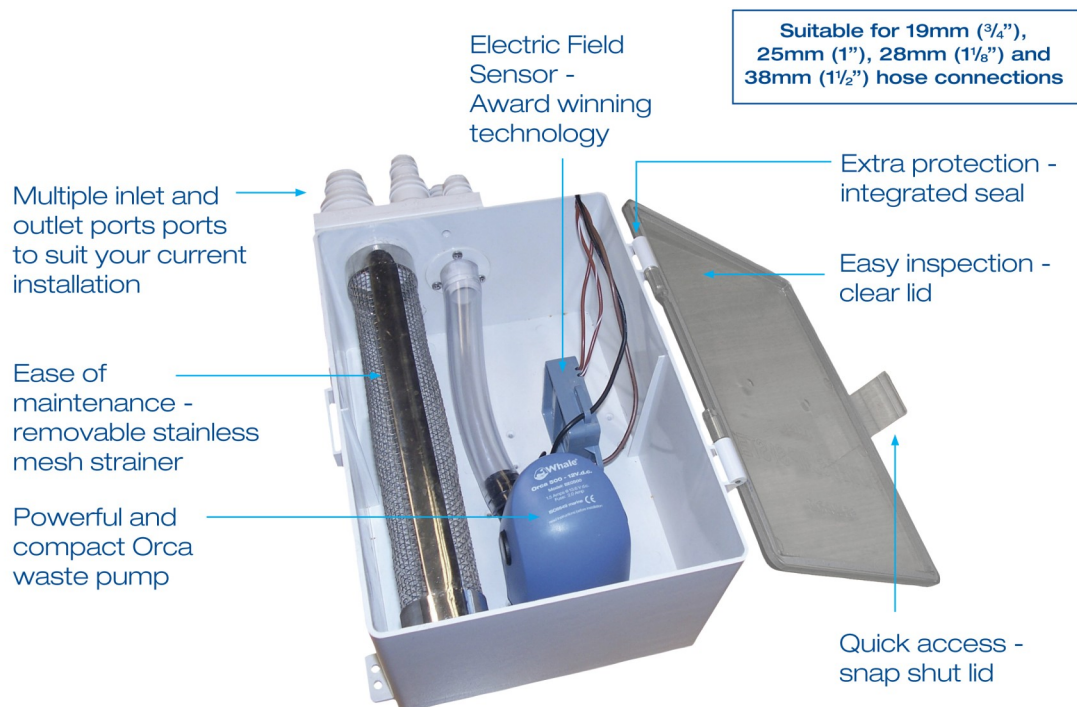
Plug N Play - Pre-assembled kit

Easy Maintenance - Clear, hinged lid and removable stainless mesh strainer for easy inspection and maintenance

Easy Installation - Multiple inlet port sizes for easy connection to existing plumbing

Reliable Operation - Electric Field Sensor Switch automatically senses water level and switches on and off

Consistent flow - Built-in non-return valve prevents cycling

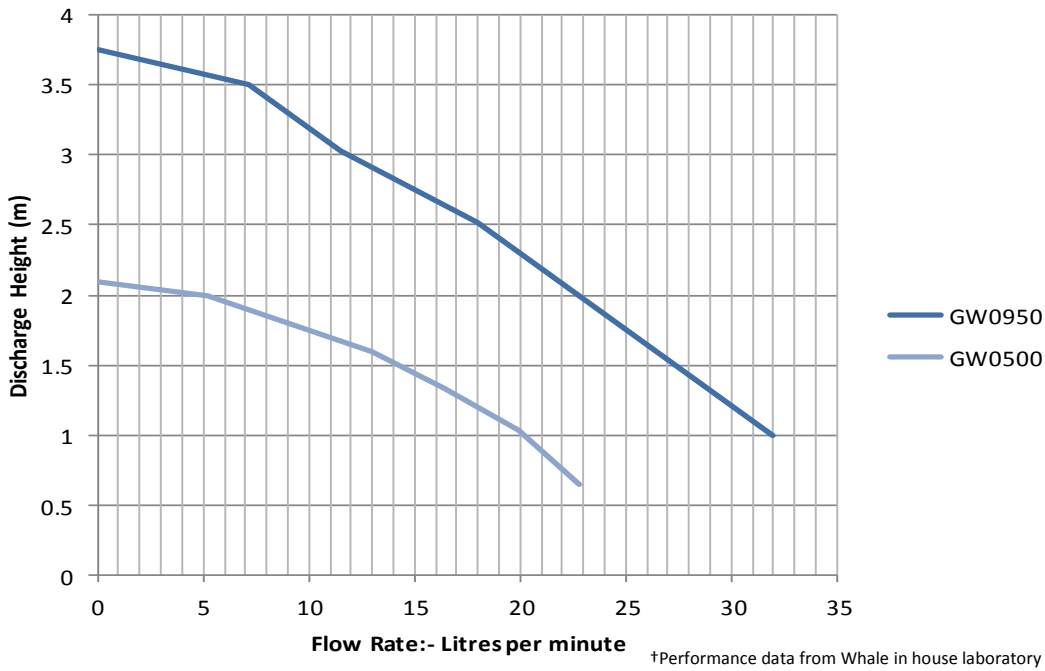


Whale Shower Sump System		
Model No.	GW0500	GW0950
Open Flow Rate @ 13.6 V d.c.	500 US GPH (32 ltrs/min)	950 US GPH (57 ltrs/min)
Flow Rate @ 1m Head	255 US GPH (16 ltrs/min)	600 US GPH (38 ltrs/min)
Voltage D.C.	12V d.c.	
Weight	2.76 lbs (1.25kg)	3.13 lbs (1.42kg)
Inlet Ports	3/4" (19mm) / 1" (25mm) / 1 1/8" (28mm) / 1 1/2" (38mm)	
Outlet Ports	3/4" (19mm) / 1" (25mm)	
Materials	Tank - ABS, Polycarbonate, Strainer - Stainless Steel Mesh. Orca - Pump body: ABS, Seals - Nitrile [®] , Impeller - Acetal Electric Field Sensor – ABS	
Warranty	1 year	

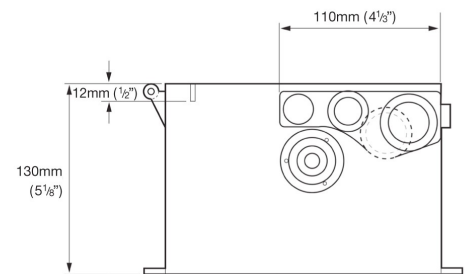
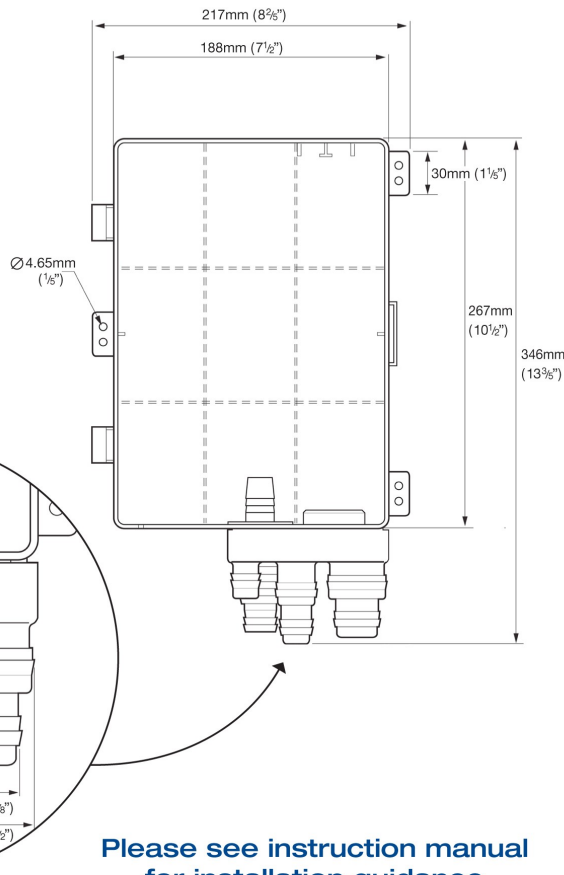
info@whalepumps.com

www.whalepumps.com

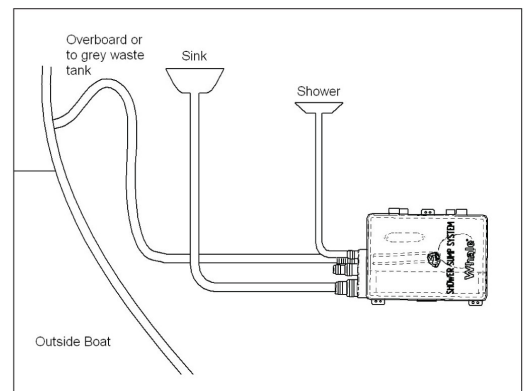
Performance Chart - GW0500 and GW0950



Product Dimensions



Typical Installation



Please see instruction manual for installation guidance